

October is National Arts and Humanities Month!

The argument about whether government should support the arts using tax dollars has long been debated. Proponents point out that the arts are economic drivers and civic catalysts that stimulate creative thinking and preserve cultural heritage. The opposition counters with arguments that the arts should be supported exclusively by the private sector and/or federal funds.

In a recent policy brief issued by the National Assembly of State Arts Agencies (NASAA) arguments against public funds for the arts are examined and the following findings are presented:

- **State funding does not cause dependence on public dollars.**

Most government grants and contracts typically provide a small part of an organization's total budget. Public dollars enable organizations to attract other sources of funding. For every \$1 contributed by the State, about \$40 is matched in earned income, donations, and/or private contributions.

- **The private sector cannot alone adequately support the public demand for access to the arts.** Private funding is often secured only by meeting conditions set by the donor. Specific projects or interests are subject to be designated by the funder. In the case of high quality, high profile arts events/exhibitions, no one source of funding is enough to

underwrite all costs. Government dollars ensure projects are undertaken with regard to serving a broad public interest.

- **Federal funding is not sufficient to support state arts agencies and the arts community in any given state.**

State arts agencies like the Hawaii State Foundation on Culture and the Arts were created by Congress to disseminate federal funding to support the arts at the community level. State funds are intended to stimulate and sustain growth in the arts industry by leveraging other funds. Reliance on State funds for indefinite support was not intended.

- **In hard times, the arts are a proven part of a state's recovery potential.** Funding the arts as opposed to items that are

needed in crises has been made to appear nonsensical. The need for the arts is best understood in the context of long-term outcomes: fewer teen pregnancies, reduced number of violent crimes, preservation of cultural artifacts, increased learning potential, knowledge of cultural traditions for future generations, and more. A society with a higher aesthetic can make for a higher ethical standard. Countries with high ethical standards can advocate for peace. A world at peace can lead to greater universal prosperity.

For the complete article, visit the [National Assembly of State Arts Agencies website](http://www.nasaa.org).



NATIONAL
arts & humanities
MONTH

OCTOBER FREE EVENTS AT HISAM

The public is invited to these free events for October 2010 to be held at the Hawai'i State Art Museum in the No. 1 Capitol District Building at 250 South Hotel Street in downtown Honolulu. See feature stories and photos of these events in this eNewsletter. For more information visit www.hawaii.gov/sfca.

Live from the Lawn - Dance Dance Dance
First Friday, October 1, 2010
6-9 p.m.

"Dance Dance Dance" will feature dance performances on the lawn by Tau Dance Theatre with Poli'ahu, Prince Dance (from Kamuela) and Hawai'i Fire Dancers followed by Amy Hanaiali'i with Jeff Peterson and Steve Jones. Performing on the lanai are Starr Kalahiki and Kit Ebersbach, Jason Tom & Skilroy, and Taimane Gardner & Jasmine Skurtu.

Second Saturday Hello, Halloween!
Saturday, October 9, 2010
11 a.m.-3 p.m.

The Hawai'i Stitchery & Fibre Arts Guild will show you how to create ghouls and creatures using trash bags and accessories to add to the fun of Halloween.

Art Lunch-Dalani Tanahy Kapa
Tuesday, October 26, 2010
12-1 p.m.

Dalani Tanahy will present a lecture/demo on kapa dyes, watermarks, instruments, agriculture, and production.

Click here to watch the National Arts and Humanities Month Public Service Announcement from Americans for the Arts and Ovation TV.

Live from the Lawn - Dance Dance Dance

Friday, October 1, 2010, 6 - 9 p.m., Hawai'i State Art Museum, Free

On First Friday, October 1, 2010 from 6 to 9 pm, the Hawai'i State Foundation on Culture and the Arts and the Friends of the Hawai'i State Art Museum (HiSAM) present "Dance Dance Dance" Live from the Lawn, featuring some of the very best dance companies in the state and Amy Hanaiali'i, Jeff Peterson and Steve Jones.

chant and dance alongside traditional hula and modern dance to pay tribute to the goddess while telling the story of Poli'ahu's family's migration through Siberia, Mongolia and Alaska.

PrinceDance was formed to create new works of dance designed to enlighten, challenge and inspire its audiences. Using a multitude of mediums, the company explores new realms of

Peterson, and Sonny Lim. Her return to the stage at HiSAM will feature songs from the album, Amy Hanaiali'i and Slack Key Masters of Hawai'i.

Live from the Lanai will feature SkillRoy and Jason Tom dance battle, Starr Kalahiki and Kit Ebersbach, and Taimane Gardner and Friends.

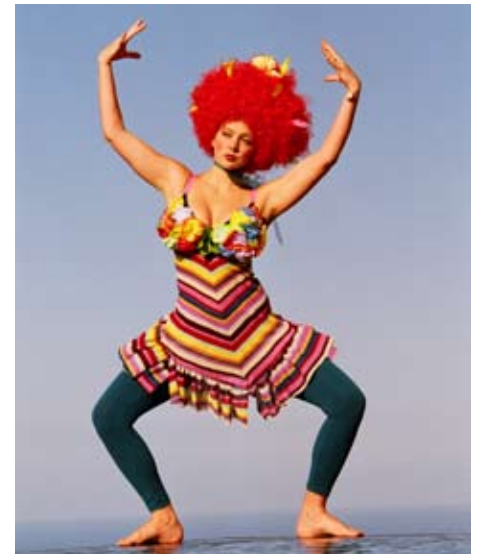
The galleries of the Hawai'i State Art Museum, Downtown@HiSAM,



Amy Hanaiali'i



Tau Dance Theater



PrinceDance

Live from the Lawn welcomes back Tau Dance Theater showcasing their upcoming World Premiere performance about the Hawaiian snow goddess in Poli'ahu - Goddess of Mauna Kea. Inspired by a bush flight over the Anaktuvuk Pass while bringing hula to the Arctic Circle, Tau Dance Artistic Director Peter Rockford Espiritu has enlisted indigenous artists to bring Yupik Eskimo, Siberian and Mongolian

expression and perspectives on personal, social and universal issues. PrinceDance strives to push boundaries and ignite new thoughts through its performances, classes, and collaborative projects.

Four time Grammy® Nominee and multi Nā Hōkū Hanohano award winner Amy Hanaiali'i just released a groundbreaking collaboration with a number of Hawai'i's top slack key artists including Cyril Pahinui, Dennis Kamakahi, Jeff

and the Museum shop, Hawaii Showcase Productions will be open during the event. Food vendors on the Lawn include: Bombay India Restaurant, Le Crepe Café, Land of Organica and Kettle Corn Hawaii. Produced by Tim Bostock Productions, for the Friends of the Hawai'i State Art Museum and the Hawai'i State Foundation on Culture and the Arts, with support from the LEF Foundation and DBEDT.



Aquarius by Tadashi Sato

HAWAII STATE ART MUSEUM, COME SEE, IT'S YOUR ART!

Check out Art & Architecture, a special exhibition at the Hawai'i State Art Museum, which explores the relationship between Art and Architecture through select commissioned works of art completed in fiscal year 2010. Featured public artists include Satoru Abe, Carol Bennett, Leland Miyano, Tadashi Sato and Doug Young.

Second Saturday–Hello, Halloween! with the Hawai'i Stitchery & Fibre Arts Guild

Saturday, October 9, 2010, 11 a.m. - 3 p.m., Hawai'i State Art Museum, Free

Bringing families closer to the arts, the Hawai'i State Foundation on Culture and the Arts, the Hawai'i State Art Museum (HiSAM) and the Friends of HiSAM present Second Saturday at the Hawai'i State Art Museum on October 9, 2010 featuring the the Hawai'i Stitchery & Fibre Arts Guild. Create ghouls and creatures to add to the fun of Halloween using trash bags and accessories. Whether your ghost's face is friendly or fierce, it'll do the job to get you in the spirit of that spooktacular day! BOO!

Gallery Hours for the Museum are 10 am to 4 pm. The hands-on Art Activities are free and open to the public from 11am to 3 pm while supplies last.

Downtown streets aren't crowded on the weekend, so walk, bike, take The Bus or drive to HiSAM on Second Saturday (\$3 flat-rate parking across the street at Ali'i Place; enter at 1099 Alakea St. Free parking available at City & County underground lot at Beretania and Alapai).

Come see-it's your art!



Get ready for Halloween with the Hawaii Stitchery & Fibre Arts Guild

Art Lunch Lecture–Dalani Tanahy

Tuesday, October 26, 2010, 12-1 p.m., Hawai'i State Art Museum, Free

An internationally recognized resource on kapa dyes, watermarks, instruments, agriculture, and production, Dalani Tanahy considers herself a Native Hawaiian revivalist artist. She is rediscovering, creating and teaching the arts of her Hawaiian ancestors while imbuing them with her own mana and mana'o. She



Dalani Tanahy

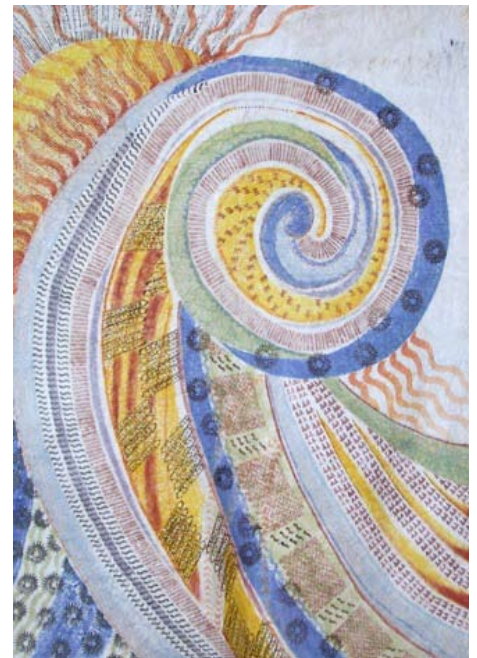
started making kapa in 1996, learning from kupuna, but also gaining knowl-

edge through experimentation, trial and error, and as a kumu kapa herself.

Since that time, Tanahy has introduced kapa to guests at Ka'ala Farm in Makaha, and in 2007 began teaching kapa techniques at Leeward Community College through the Continuing Education Program.

Born and raised in San Diego, California, Dalani Tanahy has lived in Hawai'i over 30 years, primarily in Makaha on O'ahu. She now makes frequent trips abroad to bring her knowledge and skill to audiences around the world.

For more information, please visit <http://www.kapahawaii.com>



Makalele by Dalani Tanahy

Biennium Grants Panelists Wanted:

The HSFCFA is accepting applications for Grants Panelists to review and evaluate grants proposals for the 2012-2013 Biennium Grants Funding process. Community peer panels will meet in February 2011 to make recommendations to the HSFCFA Board for the 2012-2013 biennium.

Application information is available [on-line](#), or call Annie Koh at 586-8040