

Artists in the Schools Grants

The Hawai'i State Foundation on Culture and the Arts announces its Artists in the Schools (AITS) Partnership Grants for school year 2013-2014. Application guidelines and forms will be available on the HSFCFA website after February 15.

For over forty years, the Artists in the Schools

Program has brought local artists into Hawaii's public schools to engage students in dance, drama, music, visual arts and literary arts. Over 12,000 students from 75 public and charter schools are participating in the current 2012-2013 school year. Next year will be the sixth year that the Hawaii Community Foundation matches HSFCFA funding from the State Legislature, doubling the amount available for AITS grants.

A Moanalua Middle School teacher commented on this year's drama residency for 7th graders, "It was great

to see quiet, even shy students come out of their shell a little and really participate." Another teacher said, "I take pictures during the drama workshops and give out copies to students. Parents are always pleased to see their children so happy, expressive, focused, and involved."

A 3rd grade teacher from Kalihi Uka

Elementary School noted that, "Programs like Artists in the Schools are not only a fantastic learning vehicle for students, but offer professional development opportunities for our teachers as well; [it] demonstrated to our staff how easy it is to integrate drama with subjects as diverse as science, history and literature."



AITS visual arts residency with Vicki Penney-Rohner at Innovations Public Charter School

With so few arts specialists in Hawaii schools, especially at the elementary level, the AITS grants are an opportunity to give children a joyful hands on experience with the arts: creating, performing/sharing, and reflecting/responding.



AITS dance residency with Maui Dance Council

The program provides grants of up to \$6,000 per school for a residency with a teaching artist from the Hawai'i State Foundation on Culture and the Arts Artistic Teaching Partners Roster. This year's application emphasizes the partnership between the teaching artist and the school

in setting learning goals and designing the residency. Schools are required to contribute 10% of the grant amount towards residency costs.

Download application from <http://www.hawaii.gov/sfca> after February 15. The postmark deadline is May 1, 2013. For more information, call HSFCFA staff at 586-0768.

FEBRUARY FREE EVENTS AT HISAM

The public is invited to these free events for February 2013 to be held at the Hawai'i State Art Museum in the No.1 Capitol District Building at 250 South Hotel Street in downtown Honolulu. See feature stories and photos of these events in this eNewsletter. Not subscribed to eNews? [Join here for monthly updates.](#)

First Friday
Hawai'i Opera Theater
Friday, February 1, 2013
6-9 p.m.

Enjoy the exhilarating power and passion of opera with the vocal masters from the Hawai'i Opera Theater. Galleries will be open.

Second Saturday
We LOVE Art! With the Hawaii Watercolor Society
Saturday, February 9, 2013
11 a.m.-3 p.m.

Join the talented painters of the Hawaii Watercolor Society and get ready for Valentine's Day by exploring the Colors of Love by making your own one-of-a-kind valentine.

Art Lunch
Print BIG! with Sergio Garzon
Tuesday, February 26, 2013
12 noon-1 p.m.

Printmaker Sergio Garzon shares his experiences leading a community printmaking process that resulted in artwork printed using a full-size pavement roller.

First Friday at the Hawai'i State Art Museum

Friday, February 1, 2013, Hawai'i State Art Museum, Free

Aria di sorbetto, Messa di voce, Vibrato...if you've heard these terms before, you can surmise that in February, the Hawai'i State Art Museum will feature opera, performed by the Hawai'i Opera Theatre (HOT). You don't have to understand and speak Italian to love opera! Join us on February 1 from 6 p.m. to 9 p.m. on the second floor of the Hawai'i State Art Museum for an evening of beautiful music.

Singing that evening will be members of the Mae Z. Orvis Opera Studio of Hawai'i Opera Theatre, who also appear on stage in HOT productions at the Neal Blaisdell Concert Hall with pianist Eric Schank.

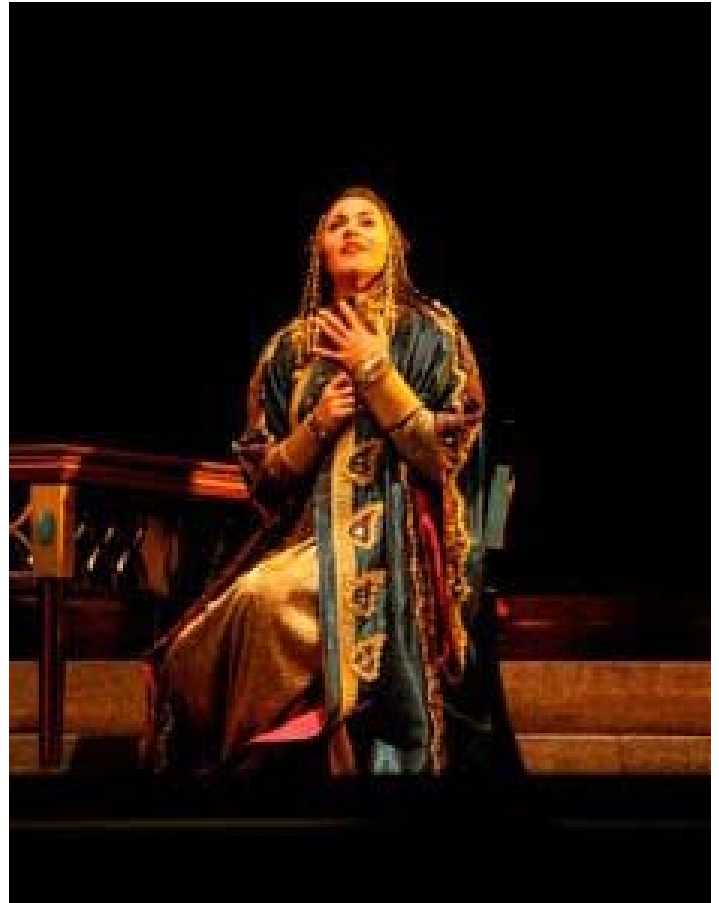
Hawai'i Opera Theatre, established in 1960, is recognized for its vibrant and creative productions and artistic excellence. Artists who have graced stages from the New York Met to opera houses throughout Europe and Asia perform on the HOT stage alongside the best local artists.

HOT is one of the largest performing arts organizations in the state and reaches thousands of young people in Hawai'i each year.

The Hawai'i State Art Museum thanks PACKids & Company for their lively showcase in January, a great start to our 2013 performances at HiSAM. Special mahalo to the vocalists and talented solo 'ukulele player.



Scenes from the Aida dress rehearsal



Scenes from the Aida dress rehearsal

SAVE THE DATE

Balinese Night at HiSAM on March 1st

The Hawai'i State Art Museum and the State Foundation on Culture and the Arts are proud to present Balinese Night on Friday March 1st, in partnership with the Hawaii Indonesian Chamber of Commerce and the Department of Business, Economic Development and Tourism. The celebration features music and traditional Balinese dances from the Gamelan Segara Madu ensemble as well as a special screening of "Where Heaven Meets Hell", an award-winning documentary on the sulphur workers of Eastern Java. Crafts, food, and children's activities will also be available.



Second Saturday:

We LOVE Art! With the Hawaii Watercolor Society

Saturday, February 9, 2013 11 a.m. – 3 p.m., Hawai'i State Art Museum, Free

Feeling the love? You will be after a get-ready-for-Valentine's Day visit to HiSAM. Explore the Colors of Love with the talented painters of the Hawaii Watercolor Society. You'll leave with a beautiful, one-of-a-kind, hand-made Valentine. Express yourself!

Gallery Hours for the museum are 10 am to 4 pm. The hands-on art activities are free and open to the public from 11 am to 3 pm while supplies last.

Downtown streets aren't crowded on the weekend, so walk, bike, take The Bus or drive to HiSAM on Second

Saturday (\$3 flat-rate parking across the street at Ali'i Place; enter at 1099 Alakea St. Free parking available at City & County underground lot at Beretania and Alapai).

Come see-it's your art!



Love multiplies everything!



My beating heart



The pentimenti of love

Celebrating the 110th Anniversary of Korean immigration to Hawai'i

Korean Dance Masks Exhibit – Change of Venue

With project partner Bare and Core Expression, HSFC's Living Heritage Series Outreach Program is assisting Korean culture and arts activities with partial funding for outreach on the Big Island.

A small traveling exhibit curated for the East-West Center by Kathy Foley, Ph.D., *Dancing the Spirit: Korean Masks, Folk Arts & Culture* will be on exhibit at The Volcano Art Center Nialani Campus in Volcano Village from February 22 through 28, 2013. This exhibit features the dance masks from the main exhibit that was shown in Honolulu from October through January, and the exhibit outreach is made possible in collaboration with the East-West Center and Dr. Foley.

The exhibit opening will include a free special performance by the Halla Huhm Dance Studio on Saturday February 23 from 2-3 pm. For more information, call 808-333-2730 or email artsforall-hawaii@hotmail.com.



Korean masks

Join the Friends of HiSAM

We invite you to join the Friends of the Hawai'i State Art Museum (HiSAM). By simply joining, you can help maintain a free, public institution dedicated to the art and people of Hawai'i. You can join by phone by calling 536-2644, or you can download an application form by clicking on [Friends of HiSAM Application Form](#).

Art Lunch: Sergio Garzon "Print BIG!"

Tuesday, February 26, 2013, Noon – 1 p.m., Free

Sergio Garzon will lead us on a visual journey through the fascinating process of a collaborative printmaking adventure. Last August, in collaboration with the Honolulu Printmakers, he presented the community involvement project "Print Big ~ From the Ground Up." The project explored imagery illustrating local farming, healthy eating, and the human condition in the islands.

The project sought to break down the barriers between the studio, the gallery, and the public by taking the printmaking process literally out onto

the streets. All work for this project was submitted in the form of a 4' x 8' woodblock and then printed by a full-size pavement roller in the Honolulu Museum of Art School driveway. Children and families attending the event were able to participate in hands-on activities such as T-shirt printing and small collaborations with artists. Print Big aimed to bring more community awareness regarding contemporary concerns about child nutrition, healthy lifestyles and childhood obesity.

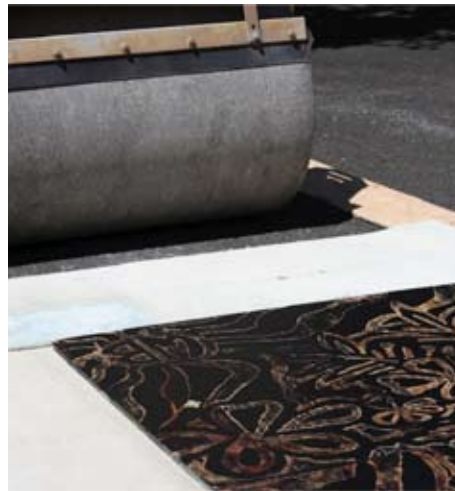
Artist Sergio Garzon was born in Bogota, Colombia and studied at the



Savannah College of Art. He earned a BFA from the Rhode Island School of Art and Design. In addition, he has studied with internationally known installation artist Sandy Skoglund, painter Michael David Singer, and sculptor Patrick Dougherty. He exhibits internationally.



Artist Laura Smith of the Honolulu Printmakers



Printing with the pavement roller



Sergio Garzon on the pavement roller

Art Bento Program for School Year 2013-2014

HSFCA is proud to announce the SY2013-14 Art Bento Program @ HiSAM, a museum education program of the Hawai'i State Art Museum.

The Art Bento Program @ HiSAM is a four-part standards-based museum education program developed for second through sixth grade students and their teachers. This unique educational experience emphasizes fine arts literacy and is led by qualified

teaching artists from the HSFCA's Artistic Teaching Partners roster. There is no cost to schools to participate in the program and funds for bus transportation to the museum are also provided.

Applications will be available on the [HSFCA website](http://www.hsfca.org) on January 30 and are due Friday, March 8. Please call Susan Hogan, Museum Educator, at 586-9958 or email hisameducation@gmail.com for additional information.

Volunteer Opportunities at the HSFCA

Interested in helping the Hawai'i State Foundation on Culture and the Arts with projects that benefit the Art in Public Places Collection? Become a volunteer! Opportunities are available in the Art in Public Places Program. Learn about Collections, assist with exhibit installations at the Hawai'i State Art Museum, support the Acquisition Award Selection Committee process, or go behind the scenes of current and upcoming public art projects. If you're an art or art history student, volunteering at the HSFCA would be a great addition to your resume. To apply, download the [volunteer application form](#), call 586-9959, or email hisamvolunteers@gmail.com.

Laila Twigg-Smith Art Scholarship 2013

Application Deadline: Varies by Summer Program

This scholarship was established by the Laila Twigg-Smith Art Fund (LAF) Advisory Committee of the Hawai'i Community Foundation to support Hawai'i-based artists in study that furthers their artistic development and offers them exposure to new ideas, influences and opportunities. Laila Twigg-Smith (12/12/44 – 3/24/98) was a well-known art collector, patron of artists and museums; art world personality; artist and visionary.

The program provides scholarships for visual artists to attend the 2013 summer programs at either:

- Anderson Ranch Arts Center, Snowmass Village, Colorado or
- Pilchuck Glass School, Stanwood, Washington

The scholarship—up to a maximum of \$2,250 per individual—is intended to be used for tuition and fees; housing and meals during the program; and travel. It is anticipated that two scholarships will be awarded for each school during 2013.

Process

• Scholarship seekers apply directly to either the Anderson Ranch Arts Center or the Pilchuck Glass School. Scholarship contacts for each school are listed below:

◦ **Anderson Ranch Arts Center** – Judy Clauson
jjclauson@andersonranch.org (970) 923-3181 ext. 205
See session schedules and descriptions at www.andersonranch.org

Deadline: March 1, 2013

◦ **Pilchuck Glass School** – Whitney Hazard
whazard@pilchuck.com (206) 621-8422 ext. 27
See session schedules and descriptions at www.pilchuck.com
Deadline: February 13, 2013

• The schools will select the recipients and notify Hawai'i Community Foundation of the awards. Neither the Foundation staff or the LAF Advisory Committee will be involved in the selection process.

Eligibility Requirements

Eligible scholarship applicants must:

- be a legal resident of the State of Hawai'i.
- be a practicing artist, graduate or undergraduate art student.
- be accepted by the school for admission to its visual arts program.
- not have received a previous LAF art scholarship to attend the same school.

Preference will be given to scholarship applicants with financial need. Individuals may apply for only one scholarship per calendar year. Additional supplementary materials may be required by each school as part of the application process.

For more information contact Terry Savage (808) 566-5508 or email tsavage@hcf-hawaii.org

I-Park 2013 Artists-in-Residence Program

Application Deadline: February 4, 2013

Self-directed, multi-disciplinary artists' residencies will be offered from May through November 2013 at the I-Park Foundation site in East Haddam, Connecticut. Most sessions are 4 weeks long and are offered to those working in the Visual Arts, Music Composition/Sound Sculpture,

Architecture, Creative Writing, Moving Image and Landscape/Garden Design. There is also a special Environmental Art Program in 2013.

Except for the \$30 application fee, the residency is offered at no cost to accepted artists and includes private living quarters, a private studio and meals.

International applicants are welcome. To defray the cost of travel, four \$750 grants will be awarded in 2013 to non-North American artists.

For details and to apply, visit I-Park's website. Contact: iparkapplications@gmail.com or 860-873-2468.

2013 Outstanding Student Achievement in Contemporary Sculpture Awards

Application Deadlines: March for universities, April for students

The International Sculpture Center (ISC) presents an annual award competition as a means of encouraging and recognizing the work of young sculptors and their supporting schools' fine arts program. Student Award winners participate in an exhibition at Grounds For Sculpture as well as a national traveling exhibition. Winners' work is also featured in Sculpture magazine. Each winner receives a one-year membership at the ISC and eligibility for a fully sponsored residency in Switzerland.

To nominate students for this competition, the nominees' university must first be an ISC University level member. To find out more about the program please visit the website www.sculpture.org/StudentAwards/2013 or email studentawards@sculpture.org

Deadlines:

University Membership Form: March 18, 2013
Online Student Nomination Form: March 25, 2013
Online Student Submission Form: April 15, 2013

Letters from our 'ohana

We welcome comments and correspondence from our community! Letters may be edited for brevity.

Aloha,
I just opened the January issue of the HiSAM newsletter and just want to say I am most impressed - very attractive graphics, very informative and inviting. May the New Year bring you success, good health and warm relationships.

*Virgie Chattergy
HiSAM volunteer*

A Christmas story

“Mr. Nakasone, it’s me, your mailman.”

Why did he not sound like his normal self? Instead, he sounded quite anxious and perhaps a bit nervous. Filled with curiosity, I rushed to open my front door.

With a feeling of perplexity, I opened my door to greet my mail carrier. There he was, my old friend, standing there with a huge smile on his face. This was unusual, for he usually just fills my mailbox, waves to me and drives on. This must be a special delivery I think to myself.

My friend held in his hands a large manila envelope. Ah, so it was a special delivery! Before he handed the envelope over to me, he pointed up at the return address corner of the envelope. Again, he smiled from ear to ear as he said, “It’s from the White House.”

Now, we were both curious as to the contents of this mysterious envelope.

“This is truly amazing!”

“This is the first time in all of the years that I have been delivering mail, that I have delivered a package from the White House.”

As it was addressed to Mrs. Lynne Yoshiko Nakasone, I asked him to wait while I called my wife. As she opened the envelope, we all waited anxiously to see its contents. Wow! It was an 8x10 autographed photo of President Obama, along with a letter of congratulations on her recent [NEA] award.

Somewhat in shock, but filled with elation, we all stood at the front door in awe at this special gift. “This has been the best gift of my life time” my wife exclaims.

We wish to share these feelings of warmth and happiness with you and your ohana.

*Lynne Yoshiko Nakasone and Clarence T. Nakasone
National Endowment for the Arts
National Heritage Fellow
“Living Treasure of America”
Nakasone Dance Academy*