



# Kāhea

*Newsletter of the Mayor's Office of Culture and the Arts*

**He po'o ulu ko na mea kanu.**

*(Plants have heads that grow again.)*

**September 1819**

The first whale ships, the *Balena* and *Equator* from New Bedford, arrive in Hawaiian waters.

**September 1922**

The Hawai'i Theatre, also known as the "*Pride of the Pacific*", opens.

**September 1838**

Lydia Kamaka'eaha, later to become Queen Lili'uokalani, the last reigning monarch of Hawai'i, is born.

**September 1918**

The new Japanese Hospital opens on Kuakini Street.

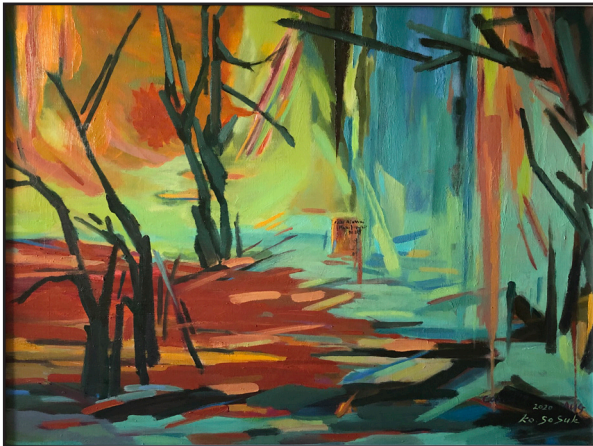
**September 1968**

*Hawai'i Five-0* debuts on the continental U.S. The CBS Show debuted four days later, Sept 30, in Hawai'i.

These unprecedented times have caused closure to Art Exhibitions in City facilities. However, the Mayor's Office of Culture and the Arts invited Artist Associations who were scheduled to exhibit their artwork in the Honolulu Hale courtyard this month to showcase their artwork within our monthly Kāhea newsletter. The featured creative works are not of your ordinary art exhibit displays but are paintings and poems that the artists' were inspired to create during this COVID-19 pandemic.

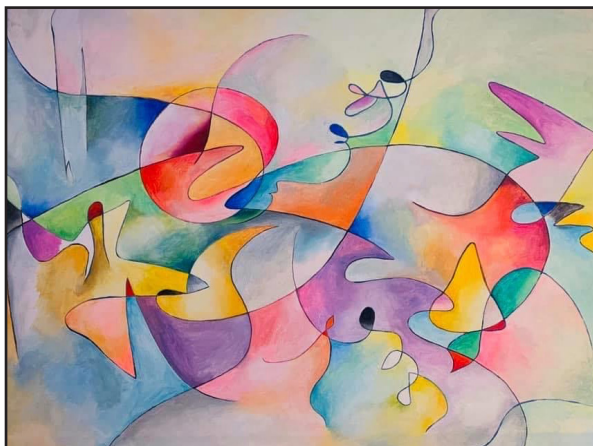
## *Korean Artists Association of Hawai'i*

So Suk Ko, *COVID 19 Afternoon in Waikiki Garden*, 2020



"Due to 2020's COVID-19, even beautiful trees look bleak to my eyes. I wanted to capture the era of COVID-19 with this work."

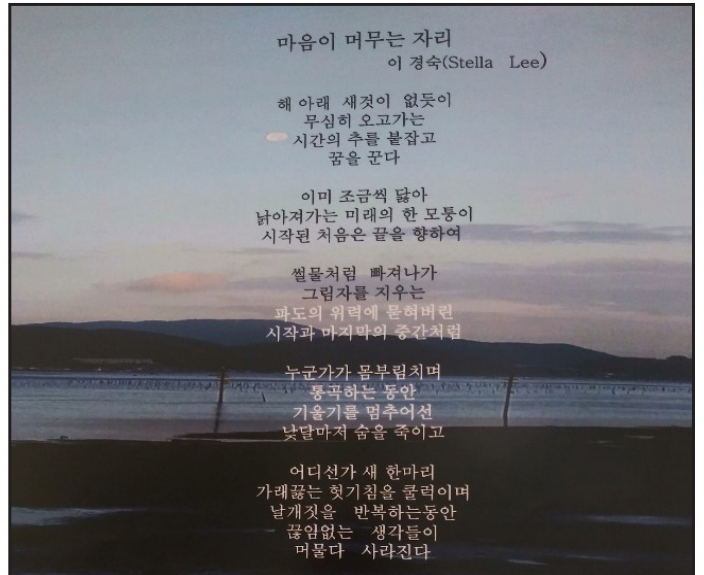
Mehee Choi Lee, *Joyful*, 2020



"There are some difficult things in our life. But I create joy and enjoy our time with my painting. Will we all be happier and more empowered?"

## *Korean Literature Association of Hawai'i*

Poetry and artwork by Stella Kyung Sook Lee



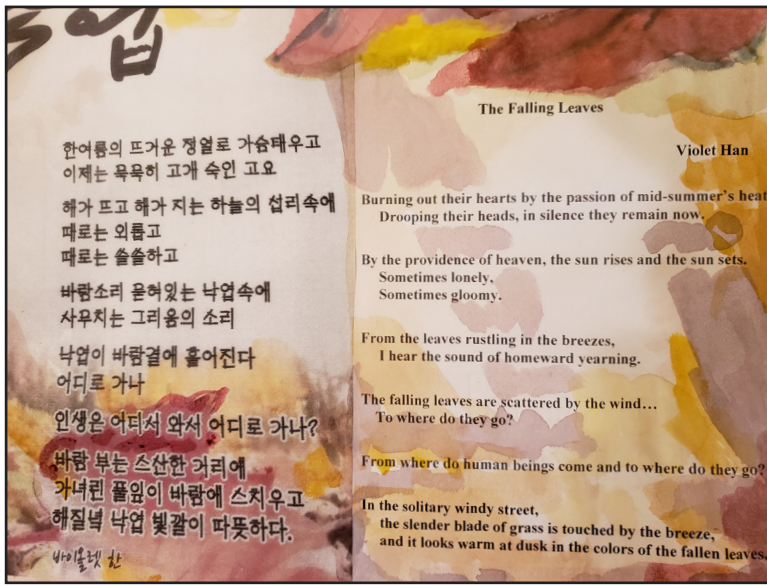
*Translation:*

"I hold on to the weight of the time that comes and goes carelessly as if there is nothing new underneath.

And the middle point of the end.

While somebody struggles and wags, stops tilting and stops breathing for the first day of the month,

while there is a constant stream of thoughts that whip up a boiling sputum and repeat the wings."



Poetry and artwork by Violet Han

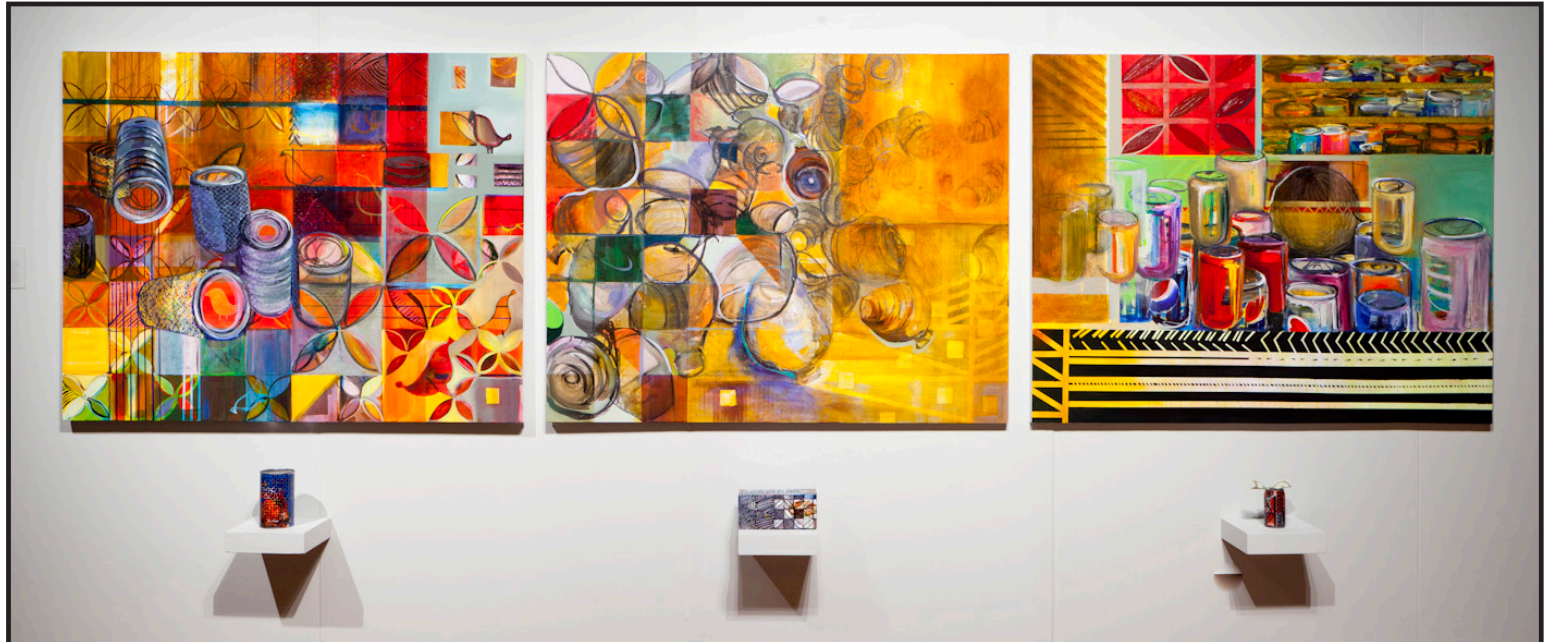


Poetry and artwork by Joe Miller

## City Artwork of the Month

Presented by the Curator of Collections of the Mayor's Office of Culture and the Arts

### *Fa'a Samoa* by Saumo Puapuaga



In 2012, the City and County of Honolulu acquired a colorful painting triptych entitled *Fa'a Samoa* by Saumo Puapuaga, a graduate of the MFA program at University of Hawai'i, Mānoa (UHM). The painting featured above is the center panel of the triptych made of mixed media on canvas, depicting taro corms with Samoan motif. In exhibition at UHM, the artist displayed this painting with a box of crackers below each portain.

Puapuaga describes the meaning of his paintings in the following words: "In Sāmoa, fa'alavelave is a traditional term involving family obligations. Literally meaning *an interruption*, it is primarily associated with significant events such as weddings, funerals, and informal occasions held at church gatherings. To defray the costs involved in preparation, Samoans reach out to immediate and extended family. The most notable aspect of fa'alavelave is the extreme giving of *sua* (ceremonial gifts) to important guests. However, because of costly expenses and sometimes inaccessibility to some *sua*, Sāmoans conveniently accommodate change through cultural appropriation. For instance, replacing the serving of the *suiga* (husked-coconut) with a soda can and a dollar bill tucked beneath its tab; the *talo ta'isi* (taro wrapped in banana leaf) with a box of soda crackers, and the *pi'ilima* (roasted chicken) with a whole canned chicken. The replacement of these ceremonial gifts acknowledges a shift in tradition, yet we continue to honor and maintain Fa'a Sāmoa, The Sāmoan Way."

This month's artwork is selected by Janelle Saole, MMA Manager and the Art Exhibit Coordinator for the Mayor's Office of Culture and the Arts.