



# Kāhea

*Newsletter of the Mayor's Office of Culture and the Arts*

*I ali'i no ke ali'i i ke kānaka. (A chief is a chief because of the people who serve him.)*

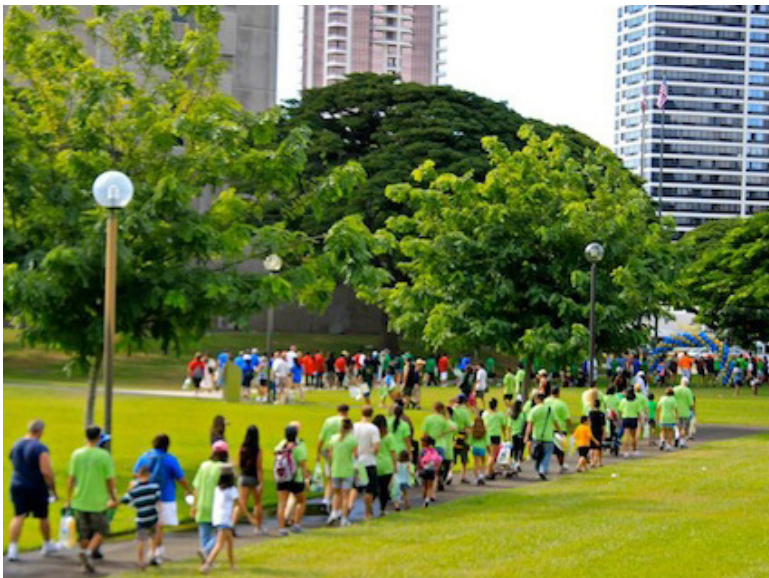
**EVENTS** on the Frank F. Fasi Civic Center Grounds



## NAMI Walks



National Alliance on Mental Illness



**Saturday, October 14**

**Check-in: 8 am**

**Start Time: 9 am**

Support raising awareness for people affected by mental illness by participating in Honolulu's NamiWalks.

Featuring free live entertainment, activities and balloons for the keiki, food and more!

*For more information visit*

*<http://www.namihawaii.org>, e-mail [info@namihawaii.org](mailto:info@namihawaii.org) or call 808-591-1297.*

## *HALLOWEEN FUN WALK*

**Sunday, October 22, Start Time: 8 am**

*Presented by*



An event to bring awareness to the importance of ending bullying of any kind.

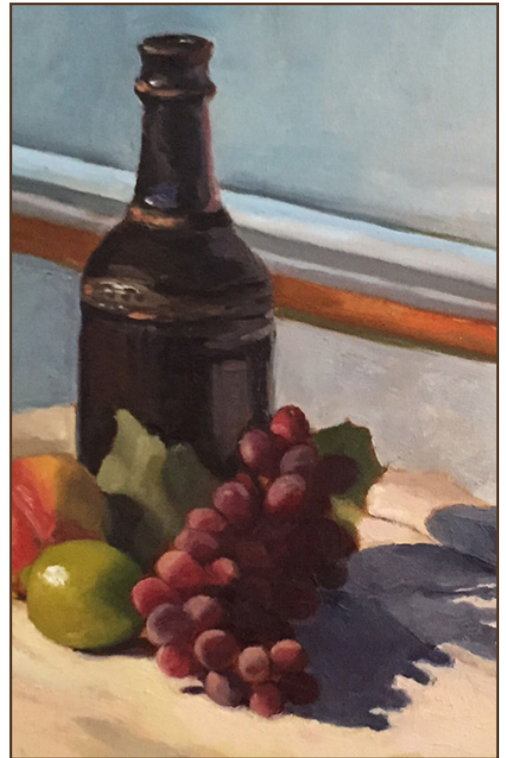
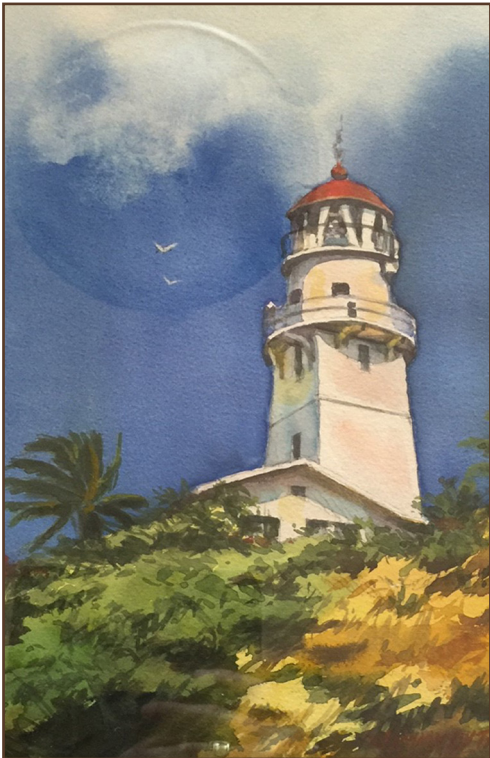
- Trick-Or-Treat
- Live Entertainment
- Vendor Booths
- Family Activities
- Costume Contest

*To register to participate (registration fee required for the walk) or more information visit <http://www.bravehawaii.org>, e-mail [bravehawaii@yahoo.com](mailto:bravehawaii@yahoo.com) or call 808-371-1928.*

# *Pamana* Presented by the Asia-Pacific Arts Consortium

Oct 3 - 26, Honolulu Hale Courtyard, 530 S King St , M - F, 8:00 am - 4:00 pm  
Artist Reception on Oct 12, 4 - 6 pm

Items of Filipino culture and artwork by local artists will be on display in October, which has been designated Filipino-American Heritage month. In English, the Tagalog word pamana means heritage or legacy.



*All detail images are from previous exhibits*

## *The City and County of Honolulu's 32nd Annual Holiday Wreath Contest*

Be part of a holiday tradition! All qualifying entries will be hung in the John C. Lane Gallery at Honolulu Hale, where they will be seen by thousands of visitors during the holiday season! Drop off date for all wreaths is **Monday, November 27, 2017 from 10:00 am to 5:00 pm**, so start working on your design now!

For more information call (808)768-6622 or download the application form at <http://www.honolulu.gov/rep/site/moca/2017WreathContest-Fillable.pdf>

## *Kūhiō Beach Hula Show*

6:30 - 7:30 pm at the Kūhiō Beach Hula Mound, near the Duke Paoa Kahanamoku statue, beachside at Uluniu & Kalākaua Ave in Waikīkī, weather-permitting. Outdoors, casual. Seating on the grass; beach chairs, mats, etc. okay. Cameras are welcome.

### **Tuesdays**

Ainsley Halemanu and  
Hula Hālau Ka Liko O Ka Palai

### **Thursdays**

Joan "Aunty Pudgie" Young  
and Puamelia

### **Saturdays**

~ **Oct 7** Jack McKeague and Hālau  
Ka Pa Hula O Ka Lei Hulu Hiwa

~ **Oct 14** Coline Aiu and  
Hālau Hula O Maiki

~ **Oct 21** Shirley Recca and  
Hālau Hula O Namakahulali

~ **Oct 28** Lilinoe Lindsey and  
Ka Pa Nani O Lilinoe

Schedule is subject to change without notice. For more info call 808-843-8002

## *Royal Hawaiian Band*

### *Kapi'olani Bandstand*

~ Oct 1, 8, 22 & 29, 2:00 pm

### *Ala Moana Centerstage*

~ Oct 4 & 18, 11 am

### *Iolani Palace*

~ Oct 6, 13, 20 & 27, 12 noon

~ **Oct 1, 9:15 am**

*24th Annual Children & Youth Day*

State Capitol Rotunda

~ **Oct 2, 5:00 pm**

Gandhi Statue

outside the Honolulu Zoo

~ **Oct 12, 1:00 pm**

Moana Hotel Banyan Courtyard

~ **Oct 15, 2:30 pm**

Windward Mall

~ **Oct 21, 11:00 am**

*Pride Parade*

From Ala Moana Park to

Kapi'olani Park

~ **Oct 28, 12 noon**

Pearlridge Center - Uptown

For performance updates and more info call 808-922-5331