



Kāhea

Newsletter of the Mayor's Office of Culture and the Arts

He ali'i ka la'i, he haku na ke aloha.

Peace is a chief, the lord of love.

August 1890

Native Hawaiian Olympic gold medal swimmer and father of modern surfing, Duke Kahanamoku was born.

August 1915

For the first time in Hawai'i History, talking pictures were featured at the Bijou in Honolulu.

August 1921

'Āinahau, the home of Princess Likelike, her husband and their daughter, Princess Ka'iulani, was destroyed by fire.

August 1950

Hawai'i's first hurricane of record, Hiki, causes Kaua'i's Waimea River to overflow and flood the town.

August 1961

Barack Obama, 44th President of the U.S. is born in Honolulu.



When you fill out the census forms, you help:

1. Determine how many seats your state gets in Congress.
2. Guide how more than \$675 billion in federal funding is distributed to states and communities each year — that equals to about \$2,500 per individual.
3. Create jobs, provide housing, prepare for emergencies, and build schools, roads and hospitals.

3 Ways to Respond:

- Mail
- Phone
- Online

The goal of Census 2020 is to count everyone once, only once and in the right place.

Ask to see Census worker ID and check for:

- Photograph
- U.S. Dept of Commerce watermark
- Expiration date

For more information on the Census, call 800-992-3530 or visit 2020census.gov



Art Exhibit at Honolulu Hale, 530 S King St, M-F, 8am - 4:30 pm

"Welcome Aboard, Next-Gen Riders!"

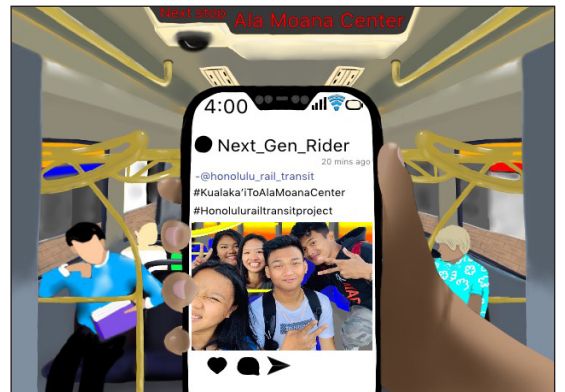
by Honolulu Authority for Rapid Transportation

August 5 - 31, Honolulu Hale 3rd Floor



Angelyn Plan, First Place, Traditional Art Category for 9th and 10th Grade, Mililani High School

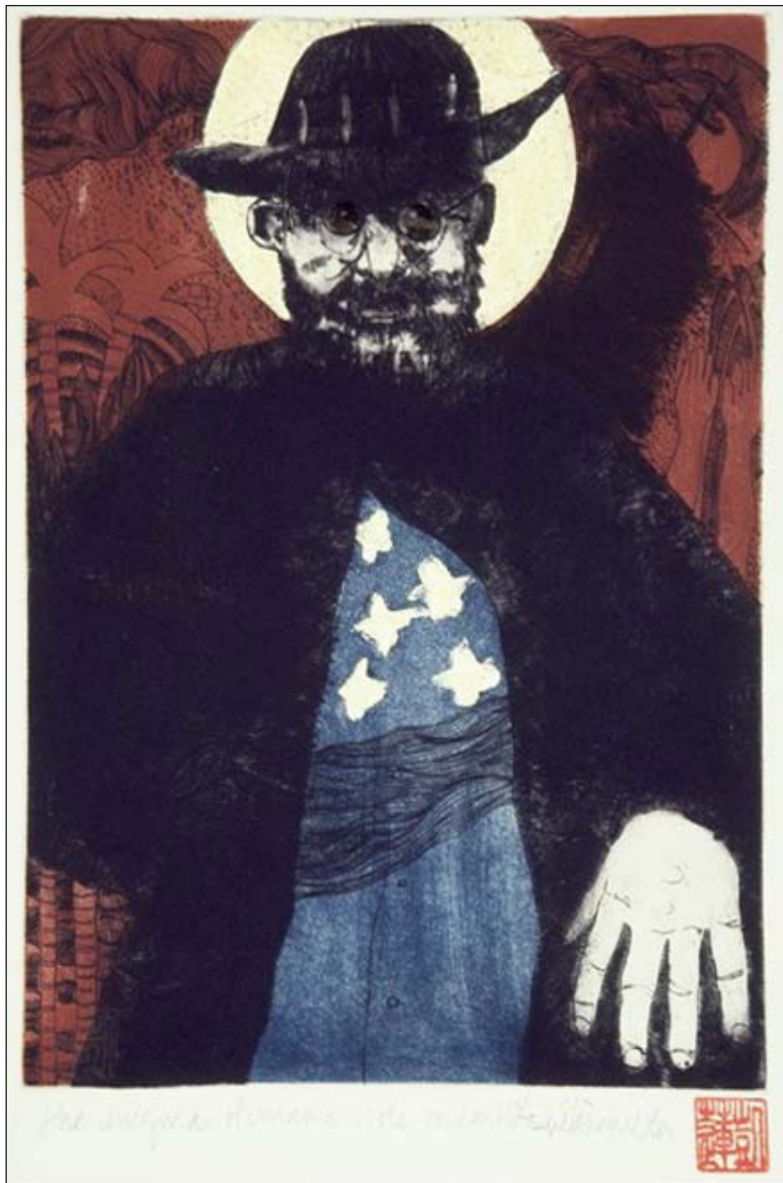
The Honolulu Authority for Rapid Transportation held it's student art poster contest. This year's theme is "Welcome Aboard, Next-Gen Riders." We asked the students to create a snapshot of how fun and easy it would be to ride the trains, especially with free wi-fi, air conditioner and relief from the stress of traffic.



Christopher Alcaraz, First Place, Digital Art Category for 11th and 12th Grade, Farrington High School

City Artwork of the Month

Presented by the Curator of Collections of the Mayor's Office of Culture and the Arts



Helene Wilder, *The Enigma of Man's Role on Earth*, 1993

In 1993, Helene Wilder was selected by the Honolulu Printmakers to create their annual Gift Print. Wilder, a former lecturer of art at the University of Hawai'i, was well known for her powerful relief prints and etchings which often explored states of human feelings and experiences. The gift print, an expressive portrait of Father Damien, adds a poignant historical dimension to her work as well.

Father Damien was a Roman Catholic priest from Belgium and member of the Congregation of the Sacred Hearts of Jesus and Mary, a missionary religious institute. He was recognized for his ministry, which he led from 1873-1889, in the Kingdom of Hawai'i for people with leprosy (Hansen's disease) in Kalaupapa Peninsula of Moloka'i. During this time, he taught the Catholic faith to the people of Hawai'i and cared for the patients himself. He established leadership within the community to build houses, schools, roads, hospitals, and churches.

Wilder states, "I chose [to feature] Father Damien because he is a big part of Hawaiian history. I chose him because of his complexity and the difficulty of understanding and the motives behind what he chose to do. Yet his accomplishments were so remarkable."

This print was gifted to the Mayor's Office of Culture and the Arts in 1994 by the late James Jensen, former Curator of Contemporary Art at the Honolulu Museum of Art.

This month's artwork is selected by Misty Kela'i, Executive Director of the Mayor's Office of Culture and the Arts.

COVID-19 Information and Resources

For the most up-to-date information on COVID-19, please visit <https://www.oneoahu.org/>. Here, you will have access to Mayor Caldwell's Stay-At-Home order, explore frequently asked questions, and be connected to a variety of helpful community resources. This pandemic has shocked the world and our entire way of life. The essential City resources are still functioning to ensure that the community is well informed, practicing social distancing protocols and hygiene practices, most of all, remaining safe at home. Our commitment to continuing our rigorous social distancing is our most important weapon to flatten the curve. We are all in this together.

A message from the Mayor's Office of Culture and the Arts:



*"It's a kākou thing!
Let's all do our part and wear
masks whenever we are out.
We are #oneoahu and we will
get through this together."*



If you cannot find the information that you are looking for at [oneoahu.org](https://www.oneoahu.org/), please call 768-CITY or email covidresponse@honolulu.gov